

Quarterly Performance Report

30. 09. 2018

Content

| | |
|--|-----------|
| Description of the Company | 3 |
| Corporate Governance..... | 7 |
| Company's shareholders structure..... | 12 |
| Information on Group structure | 13 |
| Structure of ČP Group | 18 |
| Financial information | 19 |

Description of the Company

Basic Company information

| | |
|---|---|
| <i>Company name</i> | Česká pojišťovna a.s. |
| <i>Legal form</i> | Joint stock company |
| <i>Registered office</i> | Spálená 75/16, Nové město, 110 00 Praha 1 |
| <i>ID number</i> | 452 72 956 |
| <i>Tax ID number</i> | CZ 4527 2956 |
| <i>Bankers</i> | UniCredit Bank Czech Republic and Slovakia, a.s. |
| <i>Account number</i> | 100511/2700 |
| <i>Date of inception</i> | 1 May 1992 The Company was founded as a going concern. |
| <i>Legal regulation</i> | The Company was founded (pursuant to Section 11(3) of Act No. 92/1991 Coll. on the Conditions for the Transfer of State Property to Other Entities, as amended) by the National Property Fund of the Czech Republic under a Founder's Deed dated 28 April 1992 and was incorporated by registration in the Commercial Register on 1 May 1992. |
| <i>Incorporation in Commercial Register</i> | Prague Municipal Court Part B, Entry 1464 |
| <i>Date of incorporation in Commercial Register</i> | 1 May 1992 |
| <i>Date and reason for the last change in Commercial Register</i> | 5 June 2018 Mr. Walter Kupec became a member of the Supervisory Board, Supervisory Board increased its number of members to four. |
| <i>Date of publication of the Quarterly Performance Report</i> | 09 November 2018 |
| <i>Share capital</i> | CZK 4,000,000,000 Paid up: 100 % |
| <i>Average number of employees as at 30 September 2018</i> | 2,986 |

Shares issued by Česká pojišťovna

As at 30 September 2018 the approved share capital consisted of 40,000 booked, registered shares of common stock with a total amount of CZK 4,000,000,000.

| | |
|---------------------------------------|--|
| Issue (ISIN) | CZ0009106043 |
| Type of security | common stock |
| Form | registered |
| Appearance | booked |
| Nominal value | CZK 100,000 |
| Number of securities | 40,000 |
| Total volume | CZK 4,000,000,000 |
| Issue date | 15 November 2006 |
| Listing in regulated (public) markets | Unlisted security (not traded in public markets) |

Česká pojišťovna did not hold any of its own shares, interim certificates or participating securities during the period ending 30 September 2018.

There were no changes to the Company's share capital during the period ending 30 September 2018.

Principal Businesses:

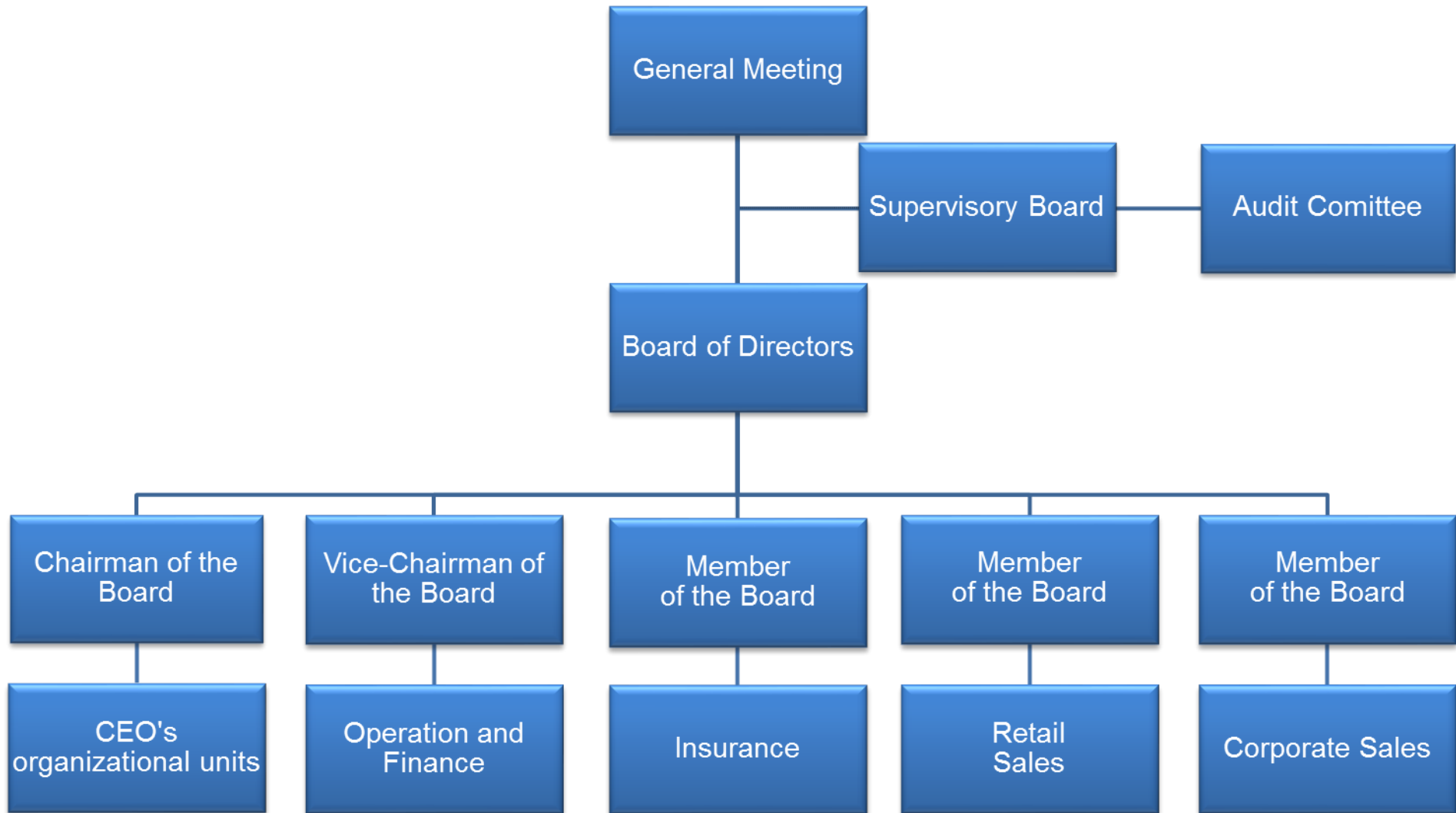
1. Insurance activities pursuant to Act No 277/2009 on insurance, comprising
 - the life insurance classes referred to in Annex 1 to the Insurance Act, Part A, I, II, III, VI, VII and IX;
 - the non-life insurance classes referred to in Annex 1 to the Insurance Act, Part B, 1, 3, 4, 5, 6, 7, 8, 9, 10, 11, 12, 13, 14, 15, 16 and 18.
2. Reinsurance activities, comprising all types of reinsurance activities under the Insurance Act.
3. Insurance- and reinsurance-related activities
 - intermediary services related to insurance and reinsurance activities under the Insurance Act;
 - consultancy services related to the insurance of natural and legal persons under the Insurance Act;
 - investigations into insurance claims pursuant to an agreement with an insurer under the Insurance Act;
 - the exercise of rights and fulfilment of obligations for and on behalf of the Czech Insurers Bureau pursuant to Act No 168/1999, as amended;
 - the intermediation of financial services referred to in a) to j) below:
 - a) intermediation of the acceptance of deposits and other funds due from the public, including intermediation in building savings schemes and supplemental pension insurance;
 - b) intermediation of loans of all types, including, without limitation, consumer loans, mortgage loans, factoring and the financing of commercial transactions;
 - c) intermediation of finance leases;
 - d) intermediation of all payments and money transfers, including credit and debit cards, travellers' cheques and bank drafts;
 - e) intermediation of guarantees and promissory notes;
 - f) intermediation of customer trading on individual customer accounts on the stock exchange or other markets, for cash or otherwise, concerning negotiable instruments and financial assets;
 - g) intermediation of the management of assets, such as cash or portfolios, all forms of collective investment management, pension fund management, escrow accounts and custodianships;
 - h) intermediation of payment and clearing services relating to financial assets, including securities, derivatives and other negotiable instruments;
 - i) advisory-based intermediation and other ancillary financial services relating to all activities listed in a) to h), including references to loans and analysis thereof, research and consultancy in the field of investments and portfolios, consultancy in the field of acquisitions and restructuring, and corporate strategy;
 - j) intermediation of the provision and transmission of financial information, financial data processing. and relevant software from providers of other financial services.
 - training activities for insurance intermediaries and independent loss adjusters.
 -

The Company also engages in all activities related to its ownership interests in other legal entities.

Company practices all business registered in the Commercial Register.

None of the businesses was limited or suspended by the Czech National Bank.

Basic Organization Chart of Česká pojišťovna



Corporate Governance

Board of Directors

Chairman

Marek Jankovič

Appointment: 7 July 2015

Born: 1966

Education: Slovak University of Technology in Bratislava

Experience: Allianz-Slovenská poisťovňa, a.s., Poisťovňa AIG Slovakia, a.s., Slovenská poisťovňa, a.s., Generali CEE Holding B.V.

Vice-chairman

Petr Bohumský

Appointment: 18 September 2017

Born: 1971

Education: Charles University, Prague, Faculty of Mathematics and Physics

University of Pittsburgh – Joseph M. Katz Graduate School of Business, Advance Healthcare Management Institute

Experience: Česká pojišťovna ZDRAVÍ a.s., Česká pojišťovna a.s., Generali Pojišťovna a.s., Generali PPF Holding B. V., PPF Group

Member

Karel Bláha

Appointment: 1 June 2015

Born: 1976

Education: Charles University, Prague; University of Economics, Prague

Experience: Česká pojišťovna a.s., Generali pojišťovna a.s., Transgas, a.s.

Member

Tomaš Vysoudil

Appointment: 1 July 2015

Born: 1972

Education: University of Jan Amos Komenský

Experience: Česká pojišťovna ZDRAVÍ a.s., Česká pojišťovna a.s., ČP Direct, a.s., Allianz penzijní společnost, a.s., Allianz pojišťovna, a.s., Allianz nadační fond

Member

Pavol Pitoňák

Appointment: 20 January 2016

Born: 1975

Education: Slovak University of Technology, Bratislava; ESCP EAP, Berlin

Experience: Allianz Slovenská poisťovňa, a.s., Allianz Slovenská dôchodková správcovská spoločnosť, a.s., Wüstenrot Poisťovňa, a.s., Wüstenrot stavebná sporiteľňa, a.s., Poisťovňa TATRA, a.s. (Poisťovňa Poštovej banky, a.s.), Generali poisťovňa, a.s.

Fields of Competence of Members of the Board of Directors

Chief Executive Officer

Marek Jankovič

Chief Sales Officer

Tomáš Vysoudil

Chief Financial Officer

Petr Bohumský

Chief Insurance Officer

Pavol Pitoňák

Chief Corporate Business Officer

Karel Bláha

Supervisory Board

Chairman

Miroslav Singer

Appointment: 1 May 2017

Born: 1968

Education: University of Economics, Prague (Mathematical methods in economics), University of Pittsburgh

Member

Luciano Cirinà

Appointment: 3 July 2015

Born: 1965

Education: Business Administration at the University of Trieste

Member

Gregor Pilgram

Appointment: 1 October 2014

Born: 1973

Education: Master of Business Administration at the Wirtschaftsuniversitaet Vienna, Austria

Member

Walter Kupec

Appointment: 5 June 2018

Born: 1961

Education: Zürich Versicherung AG, Vienna, Generali Versicherung AG, Generali Holding Vienna AGx

Audit Committee

Member

Martin Mančík

Appointment: 2 March 2017

Born: 1975

Education: University of Economics, Prague

Member

Beáta Petrušová

Appointment: 10 February 2017

Born: 1968

Education: University of Economics, Bratislava

Member

Roman Smetana

Appointment: 1 January 2016

Born: 1974

Education: University of Economics, Prague

Additional information on Persons with an Executive Authority

Persons with an executive authority are members of the Board of Directors and members of the Supervisory Board.

No member of the Company's Board of Directors or Supervisory Board is in a conflict of interest due to membership of other companies' governing bodies.

Principal activities of members of the Board of Directors and Supervisory Board in other companies, to the extent they are material for the Company:

Luciano Cirina:

- member of the governing body of Generali CEE Holding B.V., Netherlands
- head of the organizational unit Generali CEE Holding, B.V., organizační složka, having its registered office in Prague
- chairman of the Supervisory Board of Generali Insurance AD, Bulgaria
- chairman of the Supervisory Board of Generali Towarzystwo Ubezpieczeń S.A. and Generali Życie Towarzystwo Ubezpieczeń S.A., Poland
- chairman of the Supervisory Board of Generali Poist'ovňa, a.s., Slovakia,
- member of the Supervisory Board of Generali Biztosító Zrt., Hungary
- head of the organizational unit Generali Shared Services Czech Branch, organizační složka, having its registered office in Prague
- member of the Board of Directors of PJSIC INGOSSTRAKH, Russia
- member of the Supervisory Board of Generali Versicherung AG, Austria

Marek Jankovič

- member of the Board of Directors Czech Insurer's Bureau
- vice-president of the Czech Insurance Association

Petr Bohumský

- vice-chairman of the Board of Directors of Generali Pojišťovny a.s.
- member of the Supervisory Board of FINHAUS a.s.
- member of the Supervisory Board of České pojišťovny ZDRAVÍ a.s.
- member of the Supervisory Board of Penzijní společnost České pojišťovny a.s.
- member of the Supervisory Board of Nadace GCP
- member of the Supervisory Board of Europ Assistance a.s.
- vice-chairman of ČP Distribuce a.s.

Tomáš Vysoudil

- member of the Board of Directors of České pojišťovny ZDRAVÍ a.s.
- member of the Supervisory Board of Penzijní společnosti České pojišťovny a.s.
- chairman of the Supervisory Board of Nadace GCP
- chairman of the Supervisory Board of ČP Distribuce a.s.
- chairman of the Supervisory Board of FINHAUS a.s.

Karel Bláha

- member of the Board of Directors of Generali Pojišťovna a.s.
- executive of Direct Care s.r.o.

Miroslav Singer:

- member of the Supervisory Board of Generali Pojišťovna a.s.
- vice-chairman of the Supervisory Board of MONETA Money Bank a.s.

Gregor Pilgram:

- member of the governing body of Generali CEE Holding B.V., Netherlands
- member of the Supervisory Board of Generali Investments CEE, investiční společnost, a.s.
- member of the Supervisory Board of Generali Poist'ovňa, a.s., Slovakia
- member of the Supervisory Board of Generali Towarzystwo Ubezpieczeń S.A. and Generali Życie Towarzystwo Ubezpieczeń S.A., Poland
- chairman of the Supervisory Board of Generali Finance Sp. Z o.o., Poland
- member of the Supervisory Board of Generali Biztosító Zrt. and Genertel Biztosító Zrt., Hungary
- chairman of the Supervisory Board of Akcionarsko društvo za osiguranje GENERALI OSIGURANJE SRBIJA, Serbia
- chairman of the Supervisory Board of Generali osiguranje dioničko društvo, Croatia
- member of the Board of Directors of Generali Zavarovalnica d.d. Ljubljana, Slovenia
- member of the Supervisory Board of Generali Pojišťovna a.s.
- member of the Board of Directors of Akcionarsko društvo za osiguranje GENERALI OSIGURANJE MONTENEGRO Podgorica, Montenegro
- member of the Supervisory Board of Generali Versicherung AG, Austria

Pavol Pitoňák

- member of the Supervisory Board of FINHAUS a.s.
- member of the Supervisory Board of Europ Assistance a.s.

Walter Kupec

- member of the Board of Directors of Generali Holding Vienna AG, Austria;
- member of the Board of Directors of Generali Versicherung AG, Austria;
- member of the Supervisory Board of Europäische Reiseversicherung Aktiengesellschaft, Austria;
- member of the Supervisory Board of Österreichische Hagelversicherung-Versicherungsverein auf Gegenseitigkeit, Austria;
- chairman of the Supervisory Board of SK Versicherung Aktiengesellschaft, Austria

No member of the Board of Directors or Supervisory Board has been convicted of a fraud-related crime.

As at 30 September 2018 the Company did not have any records of loans or advances extended to members of the Board of Directors or the Supervisory Board.

Company's shareholders structure

As at 30 September 2018, Česká pojišťovna was part of a group; the company at the pinnacle of that group's holding structure is Generali CEE Holding B.V. The ultimate owner of Česká pojišťovna is Assicurazioni Generali S.p.A., which held a 100% stake in the voting rights associated with the shares of Generali CEE Holding B.V. The Company's sole shareholder is CZI Holdings N.V.

CZI Holdings N.V.

| | |
|--|---|
| Legal form: | joint stock company |
| Registered office: | De Entree 91, 1101 BH,, Amsterdam, Diemerhof 42, Netherlands |
| File number at the Register of the Amsterdam Chamber of Commerce and Industry: | 34245976 |
| Share capital: | EUR 100,000,000 |
| Stake in the voting rights: | 100% |
| Date of inception: | 5 April 2006 |
| Principal businesses: | financial holding |

The Company has not entered into a control agreement with its sole shareholder, CZI Holdings N.V. As at 31 December 2017 The Company compiled a Report on Relations Between the Company and Related Entities pursuant to Section 82 of Act No. 90/2012 Sb.

Information on Group structure

Controlling entities

Next to the sole shareholder CZI Holdings N.V. below are other controlling entities of the Company:

Generali CEE Holding B.V.

| | |
|--|--|
| Legal form: | limited company |
| Registered office: | De Entree 91, 1101 BH,, Amsterdam, Diemerhof 42, Netherlands |
| File number at the Register of the Amsterdam Chamber of Commerce and Industry: | 34275688 |
| Share capital: | EUR 100,000 |
| Stake in the voting rights: | 100% (indirect) |
| Share of Share capital: | 100% (indirect) |
| Date of inception: | 8 June 2007 |
| Principal businesses: | holding activities |

Assicurazioni Generali S.p.A

| | |
|-------------------------------------|---|
| Legal form: | joint stock company |
| Registered office: | Piazza Duca degli Abruzzi 2, Trieste, Italy |
| Trieste Companies' Register number: | 00079760328 |
| Share capital: | EUR 1,556,873,283 |
| Stake in the voting rights: | 100% (indirect) |
| Share of Share capital: | 100% (indirect) |
| Date of inception: | 26 December 1831 |
| Principal businesses: | providing insurance and finance products |

Amounts of receivables and payables of the Company, towards controlling entities is shown in the following table.

| (In CZK thousands) | Receivables | Payables |
|------------------------------|-------------|----------|
| Generali CEE Holding B.V. | 1 601 | (10 340) |
| Assicurazioni Generali S.p.A | 4 100 | (6 160) |

Česká pojišťovna has no securities issued by controlling entities. Company has not accepted any guarantees from controlling entities, even has not provided any guarantees to such entities.

Controlled entities

| Name | Legal form | Registered office |
|---|---------------------|---|
| Česká pojišťovna ZDRAVÍ a.s. | joint stock company | Na Pankráci 1720/123, Nusle, 140 00 Praha 4, Česká republika |
| Generali Real Estate Fund CEE a.s., investiční fond | joint stock company | Na Pankráci 1658/121, Nusle, 140 00 Praha 4, Česká republika |
| FINHAUS a.s. | joint stock company | Na Pankráci 1720/123, Nusle, 140 21 Praha 4, Česká republika |
| Nadace GCP | foundation | Na Pankráci 1658/121, Nusle, 140 00 Praha 4, Česká republika |
| CP Strategic Investments N.V. | joint stock company | De Entree 91, 1101 BH, Amsterdam, Nizozemské království |
| Acredité s.r.o. | limited company | Na Pankráci 1658/121, Nusle, 140 21 Praha 4, Česká republika |
| Generali Fond de Pensii SAF de Pensii Private S.A. | limited company | Piata Charles de Gaulle 15, PSČ 011857, Bukurešť, Rumunsko |
| Penzijní společnost České pojišťovny, a.s. | joint stock company | Na Pankráci 1720/123, Nusle, 140 21 Praha 4, Česká republika |
| Green Point Offices a.s. | joint stock company | Lamačská cesta 3/A, 841 04 Bratislava, Slovenská republika |
| Pařížská 26, s.r.o. | limited company | Václavské náměstí 823/33, Nové Město, 110 00 Praha 1, Česká republika |
| PALAC KRIZIK a.s. | joint stock company | Radlická 608/2, 150 23 Praha 5, Česká republika |
| CITY EMPIRIA a.s. | joint stock company | Na Strži 1702/65, 140 00 Praha 4, Česká republika |
| Solitaire Real Estate, a.s. | joint stock company | Václavské náměstí 823/33, Nové Město, 110 00 Praha 1, Česká republika |
| IDEE s.r.o. | limited company | Václavské náměstí 823/33, Nové Město, 110 00 Praha 1, Česká republika |
| PL Investment Jerozolimskie I Sp. z o.o. | limited company | Ul. Postępu 15B 02-676 Warszawa |
| PL Investment Jerozolimskie II Sp. z o.o. | limited company | Ul. Postępu 15B 02-676 Warszawa |
| Náměstí Republiky 3a, s.r.o. | limited company | Václavské náměstí 823/33, Nové Město, 110 00 Praha 1, Česká republika |
| MUSTEK PROPERTIES s.r.o. | limited company | Václavské náměstí 823/33, Nové Město, 110 00 Praha 1, Česká republika |
| ČP Distribuce a.s. | joint stock company | Na Pankráci 1658/121, Nusle, 140 00 Praha 4, Česká republika |
| Office Center Purkyňova, a.s. | joint stock company | Václavské náměstí 823/33, Nové Město, 110 00 Praha 1, Česká republika |
| Cleha Invest Sp. Z o.o. | limited company | ul. Królewska 18, 00-103 Warszawa, Polsko |

Following table shows stake of the Company in the voting rights and share capital of controlled entities.

| Name | Direct share on Share capital (%) | Indirect share on Share capital (%) | Direct stake in the voting rights (%) | Indirect stake in the voting rights (%) | Number of shares held by the Company | Nominal value of shares/ participation interest in CZK thousands ¹ | Purchase price of shares/ participation interest in CZK thousands (on a acquisition date) |
|---|-----------------------------------|-------------------------------------|---------------------------------------|---|--------------------------------------|---|---|
| Česká pojišťovna ZDRAVÍ a.s. | 100 | | 100 | | 105 | 105,000 | 196,250 |
| Generali Real Estate Fund CEE a.s.. investiční fond | 61.85 | | 61.85 | | 248 | 248,019 | 3,826,140 |
| FINHAUS a.s. | 100 | | 100 | | 30 | 3,000 | 277,126 |
| Nadace GCP | N/A | N/A | N/A | N/A | N/A | N/A | N/A |
| ČP Strategic Investments N.V. | 100 | | 100 | | 225,000 | 5,855 | 2,866,648 |
| Accredité s.r.o. | 80.4 | | 80.4 | | | 80 | 269,977 |
| Generali Fond de Pensii SAF de Pensii Private S.A. | 99.9 | | 99.9 | | 51,994,800 | 289,766 | 1,076,556 |
| Penzijní společnost České pojišťovny. a.s. | | 100 | | 100 | | | |
| Green Point Offices a.s. | 100 | | 100 | | 1 | 651 | 834,533 |
| Pařížská 26, s.r.o. | 100 | | 100 | | | 200 | 345,563 |
| PALAC KRIZIK a.s. | 50 | 30.93 | 50 | 30.93 | 101 | 1,010 | 527,268 |
| CITY EMPIRIA a.s. | | 61.85 | | 61.85 | | | |
| Solitaire Real Estate. a.s. | | 61.85 | | 61.85 | | | |
| IDEE s.r.o. | | 61.85 | | 61.85 | | | |
| PL Investment Jerozolimskie I Sp. z o.o. | | 61.85 | | 61.85 | | | |
| PL Investment Jerozolimskie II Sp. z o.o. | | 61.85 | | 61.85 | | | |
| Náměstí Republiky 3a. s.r.o. | | 61.85 | | 61.85 | | | |
| MUSTEK PROPERTIES s.r.o. | | 61.85 | | 61.85 | | | |
| ČP Distribuce a.s. | 100 | | 100 | | 20 | 2,000 | 56,540 |
| Office Center Purkyňova. a.s. | | 61.85 | | 61.85 | | | |
| Cleha Invest Sp. Z o.o. | | 61.85 | | 61.85 | | | |

¹ Foreign currency is translated using CNB exchange rate as at 30 September 2018.

Changes since 1 January 2018:

On 1 January 2018 a legal form of ČP Distribuce a.s. changed. The legal form was changed from a limited liability company to a public limited company. The share capital remains in the amount of CZK 2 million and consists of 20 shares with a nominal value of CZK 100,000.

Amounts of receivables and payables of the Company towards controlled entities is shown in following table.

| (in CZK thousands) | Receivables | Payables | Value of securities owned by ČP and issued by controlled entity | |
|---|-------------|-----------|---|----------------------------------|
| | | | Value of securities (purchase price) | Value of securities (book value) |
| Česká pojišťovna ZDRAVÍ a.s. | 1,152 | (6,368) | 196,250 | 196,250 |
| Generali Real Estate Fund CEE a.s., investiční fond | | | 3,826,140 | 3,826,140 |
| FINHAUS a.s. | 237 | (7,196) | 277,126 | 127,126 |
| Nadace GCP | | | N/A | N/A |
| CP Strategic Investments N.V. | | | 2,866,648 | 2,866,648 |
| Acredité s.r.o. | 1 | (246) | | |
| Generali Fond de Pensii SAF de Pensii Private S.A. | | | 1,076,556 | 1,076,556 |
| Penzijní společnost České pojišťovny, a.s. | 32,172 | (37,259) | | |
| Green Point Offices a.s. | | | 834,533 | 834,533 |
| PALAC KRIZIK a.s. | | | 527,268 | 527,268 |
| ČP Distribuce a.s. | 21,199 | (127,945) | | |
| Office Center Purkyňova, a.s. | 11,948 | | | |

The Company has no liabilities relating to securities issued by controlled entities.

Financial information

Financial statements

Statement of Financial Position

In CZK thousands

| | Current period 30. 09. 2018 | Previous period 31. 12. 2017 |
|---|--------------------------------|---------------------------------|
| Investments to subsidiaries and associates | 9,844,237 | 9,874,237 |
| Intangible assets | 909,280 | 969,183 |
| Tangible assets | 112,914 | 136,709 |
| Investments | 88,215,372 | 93,656,990 |
| Investment properties | | 6,369 |
| Loans | 27,163,596 | 24,658,790 |
| Available-for-sale | 50,722,902 | 58,053,306 |
| Financial assets at fair value through profit or loss | 10,328,874 | 10,938,525 |
| Reinsurance assets | 10,404,545 | 10,016,123 |
| Receivables | 5,482,957 | 6,347,652 |
| Deffered tax asset | 316,578 | 6,733 |
| Accruals and prepayments | 1,907,088 | 1,832,327 |
| Cash and cash equivalents | 1,795,972 | 1,683,005 |
| Total assets | 118,988,943 | 124,522,959 |
| Share capital | 4,000,000 | 4,000,000 |
| Retained earnings and other reserves | 18,846,793 | 20,669,729 |
| Total equity | 22,846,793 | 24,669,729 |
| Insurance liabilities | 61,959,110 | 63,163,668 |
| Other provisions | 399,793 | 409,895 |
| Financial liabilities | 23,381,276 | 26,071,226 |
| Payables | 8,533,678 | 8,341,604 |
| Accruals and deferred income | 1,868,293 | 1,866,837 |
| Total liabilities | 96,142,150 | 99,853,230 |
| Total equity and liabilities | 118,988,943 | 124,522,959 |

Income Statement

In CZK thousands

| | Current period 30. 09. 2018 | Previous period 30. 09. 2017 |
|---|--------------------------------|---------------------------------|
| Net earned premiums revenue | 13,671,236 | 13,381,193 |
| Insurance premium revenue | 21,493,882 | 21,038,427 |
| Insurance premium ceded to reinsurers | (7,822,646) | (7,657,234) |
| Interests and other investment income | 1,387,226 | 1,261,375 |
| Income from subsidiaries | 782,305 | 805,324 |
| Other income from financial instruments and other investments | 473,486 | 446,967 |
| Net income/loss from financial instruments at fair value through profit or loss | 269,912 | 546,924 |
| Other income | 2,186,518 | 3,872,948 |
| Total income | 18,770,683 | 20,314,731 |
| Net insurance benefits and claims | (7,992,060) | (8,380,569) |
| Gross insurance benefits and claims | (11,819,422) | (11,793,197) |
| Reinsurers' share | 3,827,362 | 3,412,628 |
| Expenses from subsidiaries | (109,767) | |
| Interest and other expenses for financial instruments and other investments | (770,330) | (553,503) |
| Acquisition costs | (2,017,418) | (2,028,102) |
| Administration costs | (1,388,681) | (1,376,961) |
| Other expenses | (2,503,624) | (4,220,954) |
| Total expenses | (14,781,880) | (16,560,089) |
| Profit before tax | 3,988,803 | 3,754,642 |
| Income tax expense | (644,029) | (539,384) |
| Net profit for the year | 3,344,774 | 3,215,258 |

Statement of comprehensive income

In CZK thousands

| | Current period 30. 09. 2018 | Previous period 30. 09. 2017 |
|--|--------------------------------|---------------------------------|
| Net profit for the year | 3,344,774 | 3,215,258 |
| Other comprehensive income - elements which may be recycled to profit or loss | | |
| Exchange rate differences in equity | 10,241 | 5,608 |
| Available-for-sale financial assets revaluation in equity | (1,757,660) | (1,319,313) |
| Available-for-sale financial assets revaluation realised in income statement | (321,132) | (362,589) |
| Available-for-sale impairment losses | 47,911 | 30,185 |
| Other comprehensive income before tax effects | (2,020,640) | (1,646,109) |
| Tax on items of Other comprehensive income | 394,970 | 313,826 |
| Other comprehensive income/loss. net of tax | (1,625,670) | (1,332,283) |
| Total Comprehensive income | 1,719,104 | 1,882,975 |

Fair value and nominal value of derivatives

| As at 30. 09. 2018 (In CZK thousands) | Fair value | Nominal value |
|---------------------------------------|------------|---------------|
| Hedging derivatives | 299 478 | 22 731 649 |
| Trading derivatives | 70 816 | 3 372 997 |

Ratios

| | 30. 09. 2018 (%) |
|---------------------------------|------------------|
| Return on average assets (ROAA) | 2.75 |
| Return on average equity (ROAE) | 14.08 |
| Non-life "Combined ratio" | 84.4 |