

Quarterly Performance Report

31. 03. 2019

Content

Description of the Company	3
Corporate Governance	7
Company's shareholders structure	12
Information on Group structure	13
Structure of ČP Group	18
Financial information	19

Description of the Company

Basic Company information

<i>Company name</i>	Česká pojišťovna a.s.
<i>Legal form</i>	Joint stock company
<i>Registered office</i>	Spálená 75/16, Nové město, 110 00 Praha 1
<i>ID number</i>	452 72 956
<i>Tax ID number</i>	CZ 4527 2956
<i>Bankers</i>	UniCredit Bank Czech Republic and Slovakia, a.s.
<i>Account number</i>	100511/2700
<i>Date of inception</i>	1 May 1992 The Company was founded as a going concern.
<i>Legal regulation</i>	The Company was founded (pursuant to Section 11(3) of Act No. 92/1991 Coll. on the Conditions for the Transfer of State Property to Other Entities, as amended) by the National Property Fund of the Czech Republic under a Founder's Deed dated 28 April 1992 and was incorporated by registration in the Commercial Register on 1 May 1992.
<i>Incorporation in Commercial Register</i>	Prague Municipal Court Part B, Entry 1464
<i>Date of incorporation in Commercial Register</i>	1 May 1992
<i>Date and reason for the last change in Commercial Register</i>	5 June 2018 Mr. Marek Kubiska and Mrs. Miloslava Mášová became members of the Supervisory Board, Supervisory Board increased its number of members to six.
<i>Date of publication of the Quarterly Performance Report</i>	10 May 2019
<i>Share capital</i>	CZK 4,000,000,000 Paid up: 100 %
<i>Average number of employees as at 31 March 2019</i>	2,984

Shares issued by Česká pojišťovna

As at 31 March 2019 the approved share capital consisted of 40,000 booked, registered shares of common stock with a total amount of CZK 4,000,000,000.

Issue (ISIN)	CZ0009106043
Type of security	common stock
Form	registered
Appearance	booked
Nominal value	CZK 100,000
Number of securities	40,000
Total volume	CZK 4,000,000,000
Issue date	15 November 2006
Listing in regulated (public) markets	Unlisted security (not traded in public markets)

Česká pojišťovna did not hold any of its own shares, interim certificates or participating securities during the period ending 31 March 2019.

There were no changes to the Company's share capital during the period ending 31 March 2019.

Principal Businesses:

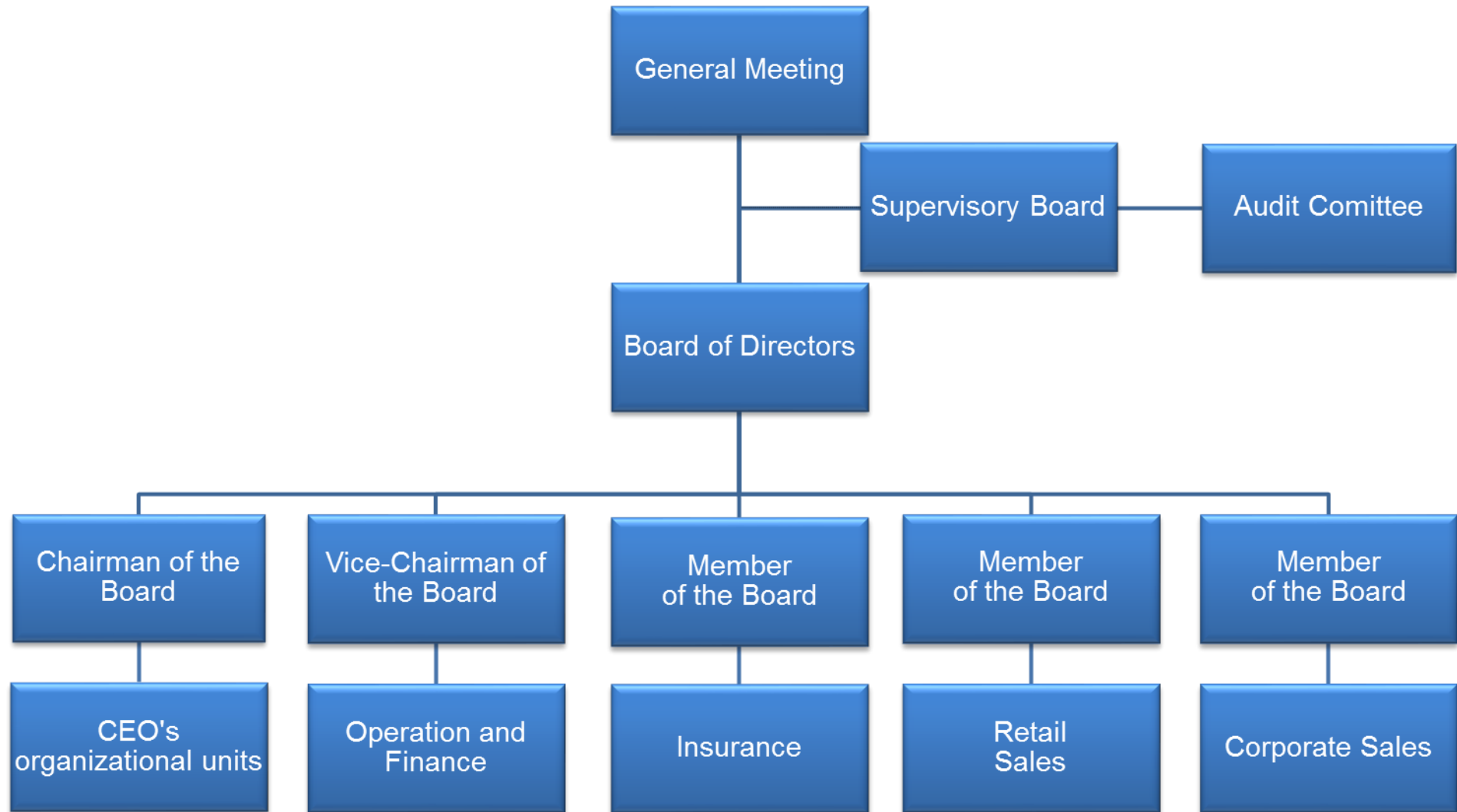
1. Insurance activities pursuant to Act No 277/2009 on insurance, comprising
 - the life insurance classes referred to in Annex 1 to the Insurance Act, Part A, I, II, III, VI, VII and IX;
 - the non-life insurance classes referred to in Annex 1 to the Insurance Act, Part B, 1, 3, 4, 5, 6, 7, 8, 9, 10, 11, 12, 13, 14, 15, 16 and 18.
2. Reinsurance activities, comprising all types of reinsurance activities under the Insurance Act.
3. Insurance- and reinsurance-related activities
 - intermediary services related to insurance and reinsurance activities under the Insurance Act;
 - consultancy services related to the insurance of natural and legal persons under the Insurance Act;
 - investigations into insurance claims pursuant to an agreement with an insurer under the Insurance Act;
 - the exercise of rights and fulfilment of obligations for and on behalf of the Czech Insurers Bureau pursuant to Act No 168/1999, as amended;
 - the intermediation of financial services referred to in a) to j) below:
 - a) intermediation of the acceptance of deposits and other funds due from the public, including intermediation in building savings schemes and supplemental pension insurance;
 - b) intermediation of loans of all types, including, without limitation, consumer loans, mortgage loans, factoring and the financing of commercial transactions;
 - c) intermediation of finance leases;
 - d) intermediation of all payments and money transfers, including credit and debit cards, travellers' cheques and bank drafts;
 - e) intermediation of guarantees and promissory notes;
 - f) intermediation of customer trading on individual customer accounts on the stock exchange or other markets, for cash or otherwise, concerning negotiable instruments and financial assets;
 - g) intermediation of the management of assets, such as cash or portfolios, all forms of collective investment management, pension fund management, escrow accounts and custodianships;
 - h) intermediation of payment and clearing services relating to financial assets, including securities, derivatives and other negotiable instruments;
 - i) advisory-based intermediation and other ancillary financial services relating to all activities listed in a) to h), including references to loans and analysis thereof, research and consultancy in the field of investments and portfolios, consultancy in the field of acquisitions and restructuring, and corporate strategy;
 - j) intermediation of the provision and transmission of financial information, financial data processing. and relevant software from providers of other financial services.
 - training activities for insurance intermediaries and independent loss adjusters.
 -

The Company also engages in all activities related to its ownership interests in other legal entities.

Company practices all business registered in the Commercial Register.

None of the businesses was limited or suspended by the Czech National Bank.

Basic Organization Chart of Česká pojišťovna



Corporate Governance

Board of Directors

Chairman

Marek Jankovič

Appointment: 7 July 2015

Born: 1966

Education: Slovak University of Technology in Bratislava

Experience: Allianz-Slovenská poisťovňa, a.s., Poisťovňa AIG Slovakia, a.s., Slovenská poisťovňa, a.s., Generali CEE Holding B.V.

Vice-chairman

Petr Bohumský

Appointment: 18 September 2017

Born: 1971

Education: Charles University, Prague, Faculty of Mathematics and Physics

University of Pittsburgh – Joseph M. Katz Graduate School of Business, Advance Healthcare Management Institute

Experience: Česká pojišťovna ZDRAVÍ a.s., Česká pojišťovna a.s., Generali Pojišťovna a.s., Generali PPF Holding B. V. (Generali CEE Holding B.V.), PPF Group

Member

Karel Bláha

Appointment: 1 June 2015

Born: 1976

Education: Charles University, Prague; University of Economics, Prague

Experience: Česká pojišťovna a.s., Generali pojišťovna a.s., Transgas, a.s.

Member

Tomaš Vysoudil

Appointment: 1 July 2015

Born: 1972

Education: University of Jan Amos Komenský

Experience: Česká pojišťovna ZDRAVÍ a.s., Česká pojišťovna a.s., ČP Direct, a.s., Allianz penzijní společnost, a.s., Allianz pojišťovna, a.s., Allianz nadační fond

Member

Pavol Pitoňák

Appointment: 20 January 2016

Born: 1975

Education: Slovak University of Technology, Bratislava; ESCP EAP, Berlin

Experience: Allianz Slovenská poisťovňa, a.s., Allianz Slovenská dôchodková správcovská spoločnosť, a.s., Wüstenrot Poisťovňa, a.s., Wüstenrot stavebná sporiteľňa, a.s., Poisťovňa TATRA, a.s. (Poisťovňa Poštovej banky, a.s.), Generali poisťovňa, a.s.

Fields of Competence of Members of the Board of Directors

Chief Executive Officer

Marek Jankovič

Chief Sales Officer

Tomáš Vysoudil

Chief Financial Officer

Petr Bohumský

Chief Insurance Officer

Pavol Pitoňák

Chief Corporate Business Officer

Karel Bláha

Supervisory Board

Chairman

Miroslav Singer

Appointment: 1 May 2017

Born: 1968

Education: University of Economics, Prague (Mathematical methods in economics), University of Pittsburgh

Member

Luciano Cirinà

Appointment: 3 July 2015

Born: 1965

Education: Business Administration at the University of Trieste

Member

Gregor Pilgram

Appointment: 1 October 2014

Born: 1973

Education: Master of Business Administration at the Wirtschaftsuniversitaet Vienna, Austria

Member

Walter Kupec

Appointment: 5 June 2018

Born: 1961

Education: Insurance Training Course, Vienna, Austria; International Property Underwriting and Reinsurance Education Programme, Zurich

Member

Miloslava Mášová

Appointment: 1 January 2019

Born: 1957

Education: University of Economics, Prague

Member

Marek Kubiska

Appointment: 1 January 2019

Born: 1977

Education: Jan Evangelista Purkyně University, Ústí nad Labem (Faculty of Social and Economic Studies)

Audit Committee

Member

Martin Mančík

Appointment: 2 March 2017

Born: 1975

Education: University of Economics, Prague

Member

Beáta Petrušová

Appointment: 10 February 2017

Born: 1968

Education: University of Economics, Bratislava

Member

Roman Smetana

Appointment: 1 January 2016

Born: 1974

Education: University of Economics, Prague

Additional information on Persons with an Executive Authority

Persons with an executive authority are members of the Board of Directors and members of the Supervisory Board.

No member of the Company's Board of Directors or Supervisory Board is in a conflict of interest due to membership of other companies' governing bodies.

Principal activities of members of the Board of Directors and Supervisory Board in other companies, to the extent they are material for the Company:

Luciano Cirina:

- member of the governing body of Generali CEE Holding B.V., Netherlands,
- head of the organizational unit Generali CEE Holding, B.V., organizační složka, having its registered office in Prague,
- chairman of the Supervisory Board of Generali Insurance AD, Bulgaria,
- chairman of the Supervisory Board of Generali Towarzystwo Ubezpieczeń S.A. and Generali Życie Towarzystwo Ubezpieczeń S.A., Poland,
- vice-chairman of the Supervisory Board of Generali Biztosító Zrt., Hungary ,
- head of the organizational unit Generali Shared Services Czech Branch, organizační složka, having its registered office in Prague,
- member of the Board of Directors of PJSIC INGOSSTRAKH, Russia,
- member of the Supervisory Board of Generali Versicherung AG, Austria,
- member of the Supervisory Board of Generali Pojišťovny a.s.,
- chairman of the Supervisory Board of Generali Holding Vienna, AG, Austria,
- chairman of the Supervisory Board of Generali Beteiligungverwaltung GmbH, Austria,
- member of the Supervisory Board of ADRIATIC SLOVENICA Zavarovalna družba d.d., Slovenia

Marek Jankovič

- chairman of the Board of Directors Czech Insurer's Bureau,
- vice-president of the Czech Insurance Association,
- chairman of the Supervisory Board of Nadační fond pro podporu vzdělávání v pojišťovnictví

Petr Bohumský

- vice-chairman of the Board of Directors of Generali Pojišťovny a.s.,
- member of the Supervisory Board of Generali Distribuce a.s.,
- member of the Supervisory Board of České pojišťovny ZDRAVÍ a.s. ,
- member of the Supervisory Board of Penzijní společnost České pojišťovny a.s.,
- member of the Supervisory Board of Nadace GCP,
- member of the Supervisory Board of Europ Assistance a.s.,
- vice-chairman of the Supervisory Board of ČP Distribuce a.s.

Tomáš Vysoudil

- member of the Board of Directors of České pojišťovny ZDRAVÍ a.s.,
- member of the Supervisory Board of Penzijní společnosti České pojišťovny a.s.,
- chairman of the Supervisory Board of Nadace GCP,
- chairman of the Supervisory Board of ČP Distribuce a.s.

Karel Bláha

- member of the Board of Directors of Generali Pojišťovna a.s.,
- executive of Direct Care s.r.o.

Miroslav Singer:

- chairman of the Supervisory Board of Generali Pojišťovna a.s.,
- vice-chairman of the Supervisory Board of MONETA Money Bank a.s.,
- chairman of the Supervisory Board of Generali Poist'ovňa a.s., Slovakia,
- member of the Supervisory Board of ADRIATIC SLOVENICA Zavarovalna družba d.d., Slovenia

Gregor Pilgram:

- member of the governing body of Generali CEE Holding B.V., Netherlands,
- member of the Supervisory Board of Generali Investments CEE, investiční společnost, a.s.,
- member of the Supervisory Board of Generali Poist'ovňa, a.s., Slovakia ,
- vice-chairman of the Supervisory Board of Generali Towarzystwo Ubezpieczeń S.A. and Generali Życie Towarzystwo Ubezpieczeń S.A., Poland,
- chairman of the Supervisory Board of Generali Finance Sp. Z o.o., Poland,
- member of the Supervisory Board of Generali Biztosító Zrt. and Genertel Biztosító Zrt., Hungary,
- chairman of the Supervisory Board of Akcionarsko društvo za osiguranje GENERALI OSIGURANJE SRBIJA, Serbia,
- chairman of the Supervisory Board of Generali osiguranje dioničko društvo, Croatia,
- member of the Board of Directors of Generali Zavarovalnica d.d. Ljubljana, Slovenia,
- member of the Supervisory Board of Generali Pojišťovna a.s.,
- member of the Board of Directors of Akcionarsko društvo za osiguranje GENERALI OSIGURANJE MONTENEGRO Podgorica, Montenegro,
- member of the Supervisory Board of Generali Versicherung AG, Austria,
- chairman of the Supervisory Board of Generali Holding Vienna, AG, Austria,
- vice-chairman of the Supervisory Board of Generali Beteiligungverwaltung GmbH, Austria,
- chairman of the Supervisory Board of ADRIATIC SLOVENICA Zavarovalna družba d.d., Slovenia,
- member of the Supervisory Board of KD SKLADI, družba za upravljanje d.o.o., Slovenia

Pavol Pitoňák

- member of the Supervisory Board of Generali Distribuce a.s.,
- member of the Supervisory Board of Europ Assistance a.s.

Walter Kupec

- member of the Board of Directors of Generali Holding Vienna AG, Austria,
- member of the Supervisory Board of Europäische Reiseversicherung Aktiengesellschaft, Austria,
- member of the Supervisory Board of Österreichische Hagelversicherung-Versicherungsverein auf Gegenseitigkeit, Austria,
- chairman of the Supervisory Board of SK Versicherung Aktiengesellschaft, Austria

Miloslava Mášová

This member of the Supervisory Board has no significant activities in other companies.

Marek Kubiska

This member of the Supervisory Board has no significant activities in other companies.

No member of the Board of Directors or Supervisory Board has been convicted of a fraud-related crime.

As at 31 March 2019 the Company did not have any records of loans or advances extended to members of the Board of Directors or the Supervisory Board.

Company's shareholders structure

As at 31 March 2019, Česká pojišťovna was part of a group; the company at the pinnacle of that group's holding structure is Generali CEE Holding B.V. The ultimate owner of Česká pojišťovna is Assicurazioni Generali S.p.A., which held a 100% stake in the voting rights associated with the shares of Generali CEE Holding B.V. The Company's sole shareholder is CZI Holdings N.V.

CZI Holdings N.V.

Legal form:	joint stock company
Registered office:	De Entree 91, 1101 BH,, Amsterdam, Diemerhof 42, Netherlands
File number at the Register of the Amsterdam Chamber of Commerce and Industry:	34245976
Share capital:	EUR 100,000,000
Stake in the voting rights:	100%
Date of inception:	5 April 2006
Principal businesses:	financial holding

The Company has not entered into a control agreement with its sole shareholder, CZI Holdings N.V. As at 31 December 2018 The Company compiled a Report on Relations Between the Company and Related Entities pursuant to Section 82 of Act No. 90/2012 Sb.

Information on Group structure

Controlling entities

Next to the sole shareholder CZI Holdings N.V. below are other controlling entities of the Company:

Generali CEE Holding B.V.

Legal form:	limited company
Registered office:	De Entree 91, 1101 BH,, Amsterdam, Diemerhof 42, Netherlands
File number at the Register of the Amsterdam Chamber of Commerce and Industry:	34275688
Share capital:	EUR 100,000
Stake in the voting rights:	100% (indirect)
Share of Share capital:	100% (indirect)
Date of inception:	8 June 2007
Principal businesses:	holding activities

Assicurazioni Generali S.p.A

Legal form:	joint stock company
Registered office:	Piazza Duca degli Abruzzi 2, Trieste, Italy
Trieste Companies' Register number:	00079760328
Share capital:	EUR 1,556,873,283
Stake in the voting rights:	100% (indirect)
Share of Share capital:	100% (indirect)
Date of inception:	26 December 1831
Principal businesses:	providing insurance and finance products

Amounts of receivables and payables of the Company, towards controlling entities is shown in the following table.

(In CZK thousands)	Receivables	Payables
Generali CEE Holding B.V.	0	(12 940)
Assicurazioni Generali S.p.A	5 183	(16 492)

Česká pojišťovna has no securities issued by controlling entities. Company has not accepted any guarantees from controlling entities, even has not provided any guarantees to such entities.

Controlled entities

Name	Legal form	Registered office
Česká pojišťovna ZDRAVÍ a.s.	joint stock company	Na Pankráci 1720/123, 140 21, Praha 4, Česká republika
Generali Real Estate Fund CEE a.s., investiční fond	joint stock company	Na Pankráci 1658/121, 140 21, Praha 4, Česká republika
Nadace GCP	foundation	Na Pankráci 1658/121, 140 21, Praha 4, Česká republika
CP Strategic Investments N.V.	joint stock company	De Entree 91, 1101 BH, Amsterdam, Nizozemské království
Acredité s.r.o.	limited company	Na Pankráci 1658/121, 140 21, Praha 4, Česká republika
Generali Fond de Pensii SAF de Pensii Private S.A.	limited company	Piata Charles de Gaulle 15, 011857, Bukurešť, Rumunsko
Penzijní společnost České pojišťovny, a.s.	joint stock company	Na Pankráci 1720/123, 140 21, Praha 4, Česká republika
Green Point Offices a.s.	joint stock company	Lamačská cesta 3/A, 841 04, Bratislava, Slovenská republika
Pařížská 26, s.r.o.	limited company	Václavské náměstí 823/33, 110 00, Praha 1, Česká republika
PALAC KRIZIK a.s.	joint stock company	Radlická 608/2, 150 23, Praha 5, Česká republika
CITY EMPIRIA a.s.	joint stock company	Na Strži 1702/65, 140 00, Praha 4, Česká republika
Solitaire Real Estate, a.s.	joint stock company	Václavské náměstí 773/4, 110 00, Praha 1, Česká republika
IDEE s.r.o.	limited company	Václavské náměstí 823/33, 110 00, Praha 1, Česká republika
PL Investment Jerozolimskie I Sp. z o.o.	limited company	Ul. Postępu 15B 02-676 Warszawa, Polsko
Náměstí Republiky 3a, s.r.o.	limited company	Václavské náměstí 823/33, 110 00, Praha 1, Česká republika
MUSTEK PROPERTIES s.r.o.	limited company	Václavské náměstí 823/33, 110 00, Praha 1, Česká republika
ČP Distribuce a.s.	joint stock company	Na Pankráci 1658/121, 140 00, Praha 4, Česká republika
Office Center Purkyňova, a.s.	joint stock company	Václavské náměstí 823/33, 110 00, Praha 1, Česká republika
Cleha Invest Sp. Z o.o.	limited company	ul. Królewska 18, 00-103 Warszawa, Polsko
Direct Care s.r.o.	limited company	Na Pankráci 1658/121, 140 00, Praha 4, Česká republika
SIBSEN Invest Sp. Z o.o.	limited company	ul. Wspólna 72, 00-687 Warszawa, Polsko
Palác Špork, a.s.	joint stock company	Hybernská 1034/5, 110 00, Praha 1, Česká republika

Following table shows stake of the Company in the voting rights and share capital of controlled entities.

Name	Direct share on Share capital (%)	Indirect share on Share capital (%)	Direct stake in the voting rights (%)	Indirect stake in the voting rights (%)	Number of shares held by the Company	Nominal value of shares/ participation interest in CZK thousands ¹	Purchase price of shares/ participation interest in CZK thousands (on a acquisition date)
Česká pojišťovna ZDRAVÍ a.s.	100		100		105	105,000	196,250
Generali Real Estate Fund CEE a.s., investiční fond	65.92		65.92		296	295,981	4,680,060
Nadace GCP	N/A	N/A	N/A	N/A	N/A	N/A	N/A
CP Strategic Investments N.V.	100		100		225,000	5,805	1,366,648
Acredité s.r.o.	80.4		80.4			80	291,886
Generali Fond de Pensii SAF de Pensii Private S.A.	99.9		99.9		51,994,800	281,506	1,076,556
Penzijní společnost České pojišťovny, a.s.		100		100			
Green Point Offices a.s.	100		100		1	645	834,533
Pařížská 26, s.r.o.	100		100			200	345,563
PALAC KRIZIK a.s.	50	32.96	50	32.96	101	1,010	527,268
CITY EMPIRIA a.s.		65.92		65.92			
Solitaire Real Estate, a.s.		65.92		65.92			
IDEE s.r.o.		65.92		65.92			
PL Investment Jerozolimskie I Sp. z o.o.		65.92		65.92			
Náměstí Republiky 3a, s.r.o.		65.92		65.92			
MUSTEK PROPERTIES s.r.o.		65.92		65.92			
ČP Distribuce a.s.	100		100		20	2,000	56,540
Office Center Purkyňova, a.s.		65.92		65.92			
Cleha Invest Sp. Z o.o.		65.92		65.92			
SIBSEN Invest Sp. Z o.o.		65.92		65.92			
Palác Špork, a.s.		65.92		65.92			
Direct Care s.r.o.	100		100			1,000	114,645

¹ Foreign currency is translated using CNB exchange rate as at 31 March 2019.

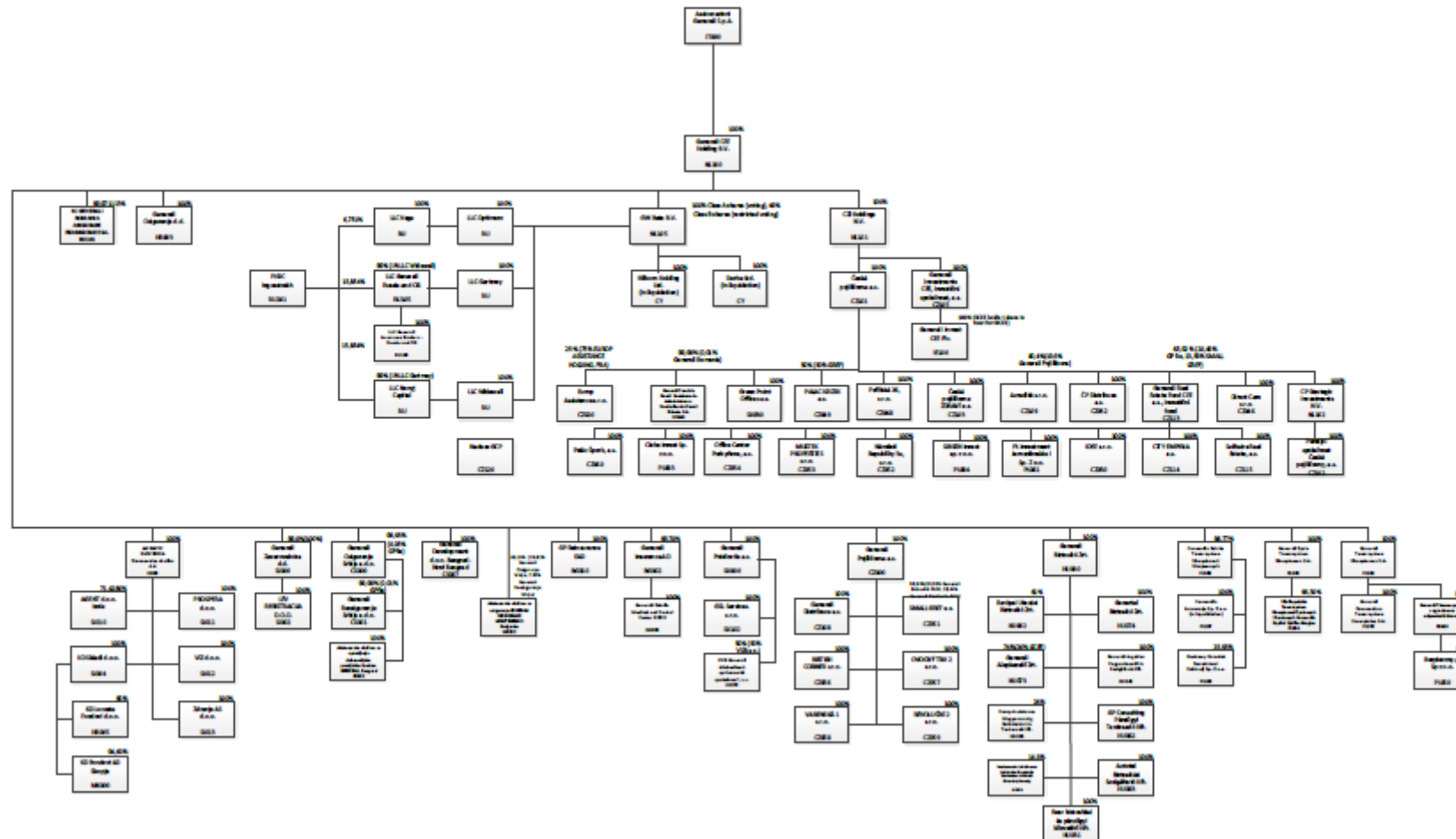
No changes since 1 January 2019.

Amounts of receivables and payables of the Company towards controlled entities is shown in following table.

(in CZK thousands)	Receivables	Payables	Value of securities owned by ČP and issued by controlled entity	
			Value of securities (purchase price)	Value of securities (book value)
Česká pojišťovna ZDRAVÍ a.s.	28,298	(78,657)	196,250	196,250
Generali Real Estate Fund CEE a.s., investiční fond			4,680,060	4,680,060
Nadace GCP			N/A	N/A
CP Strategic Investments N.V.			1,366,648	1,366,648
Acredité s.r.o.	19	(113)		
Generali Fond de Pensii SAF de Pensii Private S.A.			1,076,556	1,076,556
Penzijní společnost České pojišťovny, a.s.	32,188	(40,340)		
Green Point Offices a.s.			834,533	834,533
PALAC KRIZIK a.s.			527,268	527,268
ČP Distribuce s.r.o.	1,155	(30,002)		
Office Center Purkyňova, a.s.	17,353			
Palác Špork, a.s.		(193)		

The Company has no liabilities relating to securities issued by controlled entities.

Structure of ČP Group



Financial information

Financial statements

Statement of Financial Position

In CZK thousands

	Current period 31. 03. 2019	Previous period 31. 12. 2018
Investments to subsidiaries and associates	9,037,510	9,037,510
Intangible assets	1,055,018	1,026,823
Tangible assets	980,589	110,659
Investments	80,682,938	86,678,629
Investment properties	299,665	
Loans	20,254,788	24,258,033
Available-for-sale	51,039,361	54,118,697
Financial assets at fair value through profit or loss	9,089,124	8,301,899
Reinsurance assets	10,592,095	10,502,709
Receivables	5,326,597	5,280,498
Long term assets held for sale	755,533	755,533
Deffered tax receivable	229,835	417,008
Accruals and prepayments	1,551,931	1,976,146
Cash and cash equivalents	1,561,397	1,303,814
Total assets	111,773,443	117,089,329
Share capital	4,000,000	4,000,000
Retained earnings and other reserves	19,752,926	18,389,628
Total equity	23,752,926	22,389,628
Insurance liabilities	61,020,103	60,920,141
Other provisions	366,770	368,562
Financial liabilities	16,433,355	22,876,000
Payables	8,582,682	9,050,254
Accruals and deferred income	1,617,607	1,484,744
Total liabilities	88,020,517	94,699,701
Total equity and liabilities	111,773,443	117,089,329

Income Statement

In CZK thousands

	Current period 31. 03. 2019	Previous period 31. 03. 2018
Net earned premiums revenue	4,499,419	4,509,593
Insurance premium revenue	7,144,163	7,049,645
Insurance premium ceded to reinsurers	(2,644,744)	(2,540,052)
Interests and other investment income	409,355	443,204
Other income from financial instruments and other investments	141,429	343,311
Net income/loss from financial instruments at fair value through profit or loss	446,389	(222,815)
Other income	742,104	799,290
Total income	6,238,696	5,872,583
Net insurance benefits and claims	(3,191,004)	(2,240,348)
Gross insurance benefits and claims	(4,320,901)	(3,518,532)
Reinsurers' share	1,129,897	1,278,184
Other expenses for financial instruments and other investments	(180,190)	(194,749)
Acquisition costs	(668,456)	(790,490)
Administration costs	(471,194)	(487,869)
Other expenses	(872,121)	(951,715)
Total expenses	(5,382,965)	(4,665,171)
Profit before tax	855,731	1,207,412
Income tax expense	(168,051)	(228,645)
Net profit for the year	687,680	978,767

Statement of comprehensive income

In CZK thousands

	Current period 31. 03. 2019	Previous period 31. 03. 2018
Net profit for the year	687,680	978,767
Other comprehensive income - elements which may be recycled to profit or loss		
Exchange rate differences in equity	9,848	2,639
Available-for-sale financial assets revaluation in equity	891,757	(574,185)
Available-for-sale financial assets revaluation realised in income statement	(39,400)	(244,539)
Available-for-sale impairment losses	33,655	13,169
Other comprehensive income before tax effects	895,860	(802,916)
Tax on items of Other comprehensive income	(161,948)	36,426
Other comprehensive income/loss. net of tax	733,912	(766,490)
Total Comprehensive income	1,421,592	212,277

Fair value and nominal value of derivatives

As at 31. 03. 2019 (In CZK thousands)	Fair value	Nominal value
Hedging derivatives	(348,278)	31,616,531
Trading derivatives	9,432	9,318,489

Ratios

	31. 03. 2019 (%)
Return on average assets (ROAA)	0.60
Return on average equity (ROAE)	2.98
Non-life "Combined ratio"	87.30